

Introduction to Building Craftsman Kits



Overview

- * This clinic is designed to show you some basic concepts when starting out building craftsman style buildings.
- * This clinic will cover tools needed, basic building, painting and assembly techniques.

Safety First

- * Make sure to wear the proper safety equipment when cutting, painting, and any other technique requiring protection.
- * Purchase quality tools. Spend a little extra and get a quality tool that will last a long time.

Tools Needed

- * Cutting Mat
- * Number 11 blade
- * Chopper
- * Razor blades
- * Weights (123 Blocks)
- * Glue
- * Paint & Paint Brushes

Tools Needed (cont.)

- * Grout Sponge
- * Pencil
- * Rubber Bands
- * Metal Ruler
- * Weathering Supplies
- * Nail Sander
- * Many More.....

Getting Started

- * For this clinic, I used Fos Scale Models “Huxley & Powell” foundation series kit.
- * The Foundation Series is a great inexpensive line of kits for beginners.
- * You want to open your kit and familiarize yourself with the contents.
- * ***READ THE INSTRUCTIONS***

SINCE 2002
Celebrating 15 Years

FOS SCALE
MODELS



FOS FOUNDATIONS

EASY TO BUILD MODEL RAILROAD STRUCTURE KITS



SAVE FOR
YOUR FAVORITE
MODELS

www.fosscalemodels.com

HAVE FUN
BUILDING
MODELS

PO BOX 1321 PAWCATUCK, CT 06379 - MADE IN THE USA

WARNING: THIS PRODUCT MAY CONTAIN CHEMICALS KNOWN TO THE STATE OF CALIFORNIA TO CAUSE CANCER & REPRODUCTIVE OR OTHER DEVELOPMENTAL HARM. THIS IS AN ADULT HOBBY PRODUCT NOT INTENDED FOR CHILDREN. TOYS, FIGURES, VEHICLES & SCENARY NOT INCLUDED.

© Fox Scale Models, LLC

www.facebook.com/fosmodels fosmodels@foxscalemodels.com

Paint is the exterior - attached to the kit and not included and paint



FOS
FOUNDATIONS

MUXLEY MILLING \$37.50

Assembly Instructions Footprint: 2.25" x 9.75"

- 1. WALLS** - To prevent warping spray both sides of the walls with a gray primer. Regular white primer from a spray can works fine.
- 2. TRIM** - While the walls are drying take the time to paint the 1/16" square wood trim. Start with the corner trim. Choose a color that will contrast with the wall color. Use acrylic based craft paints. Be sure to apply as thin a coat as possible. If you want to create a peeled paint effect, paint the first coat a tan

the tools



All about dry wall, insulation, wiring, plumbing & more... visit www.huxleyandpowell.com



HUXLEY MILLING \$37.50
 Assembly Instructions *Finished: 8 1/2" x 11"*

1. WALLS - To prevent warping spray both sides of the walls with a grey primer. Regular sand primer from a spray can works best.

2. TRIM - When they are drying take the time to sand the 1/2" square wood trim with the corner trim. Choose a color that will contrast with the wall colors. Use your acrylic based craft paints. Be sure to apply an extra coat as you can. If you want to create a primer coat for wall color with a good sheen then use acrylic latex paint from a can and use a roller for the primer.

3. DOORS & WINDOWS - Prime both the basic windows and the door and door and windows by dry brushing with white paint - apply only to the inside trim and replace white trim, or the part that you are fairly sure will be on the surface and with dark colors. Use a roller for the inside trim. This will highlight the windows and doors in the final house. Cut out other windows to fit window openings for glass or use Corning Glass or Safety Glass, an extra wide to add glazing. Using a hot glue apply the wood coming over your trim window frames and an 8" x 8" piece of clear white glue around the window edges. Glue in place any floor trusses and doors.

4. How tall 1 1/2" wood corner bracing in the walls. Once you joined both sides of the walls, there should be no warping. If you feel you need more bracing can you sand-wood you need have. For the two gable walls, make sure the top of the wall is square and flat. Add a piece of 1/2" in each corner on the back of the wall as they are built with the edges. These will also serve as a joining edge when you assemble the walls. See diagram below.

5. CORNER TRIM - After you added the corner bracing add the corner trim. Again, use the corner bracing. It is placed directly to the vertical edge of the wall. - fit the corner bracing. The angled way is to glue it in place slightly finger then pressed and not flush to fit with a razor blade. SEE PLAN Cut out the wood trim. Apply glue to the back and place in long wall. Making sure it is straight - use your finger nail to press it into the channel.

to it always joined on. Apply glue with a sponge on top of edge as it dries.

6. ASSEMBLE THE WALLS - Now join the walls together. Start by joining a gable wall to a window. Use white glue - on the bottom. Tack the top edge of each wall. It's thick and glue slowly. Apply glue to inside edge of the window. Use a 1/2" x 1/2" x 1/2" block and work into the window. A metal flathead screwdriver. Use the remaining wall to make up the frame.

7. Roofing - Find the best section that works. Start the ridge and underlath (minimum 1/2" max). Lay it flat and glue it to the ceiling and the walls. Then find the best section that fits the walls and glue to the ridge and the walls. Then find the best section that fits the walls and glue to the ridge and the walls.

Find the roofing paper and apply it to the back of a sheet and glue it to the roof paper. Then find the best section that fits the walls and glue to the ridge and the walls. Use white glue applied to back of roof paper and edges of roof.



PLAN VIEW

8. CHIMNEY - Using glue with red primer. Then using white acrylic paint. Use the handle on the chimney roof using white acrylic paint. Use the handle on the chimney roof using white acrylic paint.

To make chimney, cut a hole in roof to make and glue in place. Use the handle on the chimney roof using white acrylic paint. Use the handle on the chimney roof using white acrylic paint.



CHIMNEY

Use the handle on the chimney roof using white acrylic paint. Use the handle on the chimney roof using white acrylic paint.

Use the handle on the chimney roof using white acrylic paint. Use the handle on the chimney roof using white acrylic paint.

Use the handle on the chimney roof using white acrylic paint. Use the handle on the chimney roof using white acrylic paint.

Use the handle on the chimney roof using white acrylic paint. Use the handle on the chimney roof using white acrylic paint.



Bracing Your Walls

- * The first step is to brace your walls. When you start to introduce stain and paint, your walls will warp to a degree.
- * The Glue I use is Weld-Bond white glue.
- * At this point you will take your 1/8" square bracing and cut them to size based on your wall.
- * You will only need a small amount of glue to adhere the bracing to the back of your wall. Refer back to your directions on proper placement as all kits are different. It's ok to add extra bracing if desired. Local hobby shops or hardware stores could carry the 1/8" square bass wood.



STEEL TOUGH
WELDBOND
UNIVERSAL ADHESIVE



BONDS MOST ANYTHING
COLLE TOUT ... OU PRESQUE
UNE CASI TODO



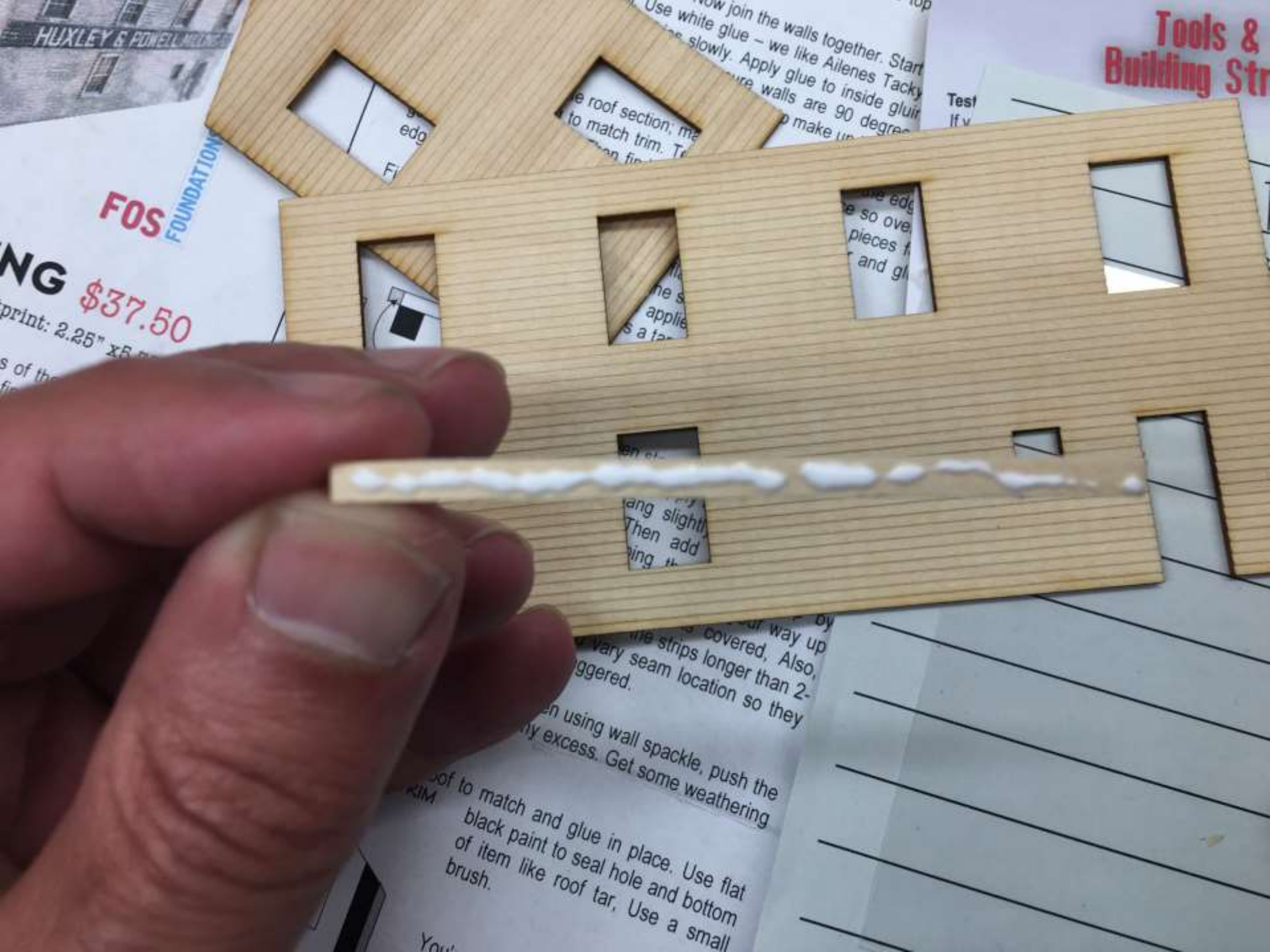
DRIES CRYSTAL CLEAR
DEVIENT TRANSPARENT EN SECHANT
TRANSPARENTE COMO EL CRISTAL N. SECHA



PERMANENT AND FLEXIBLE
PERMANENT ET SOUPLE
PERMANENTE Y FLEXIBLE

420 ml / 14.2 fl.oz.

NON TOXIC GLUE * | COLLE NON TOXIQUE *
PEGAMENTO NO TOXICO *



Tools & Building Str

Test
If v

HUXLEY & EDWELL

FOS

FOUNDATION

NG \$37.50
print: 2.25" x 5"

Use white glue - we like Ailenes Tacky
Apply glue to inside gluit
walls are 90 degree

the edge
so ove
pieces f
and gl

the s
applied
s a fa

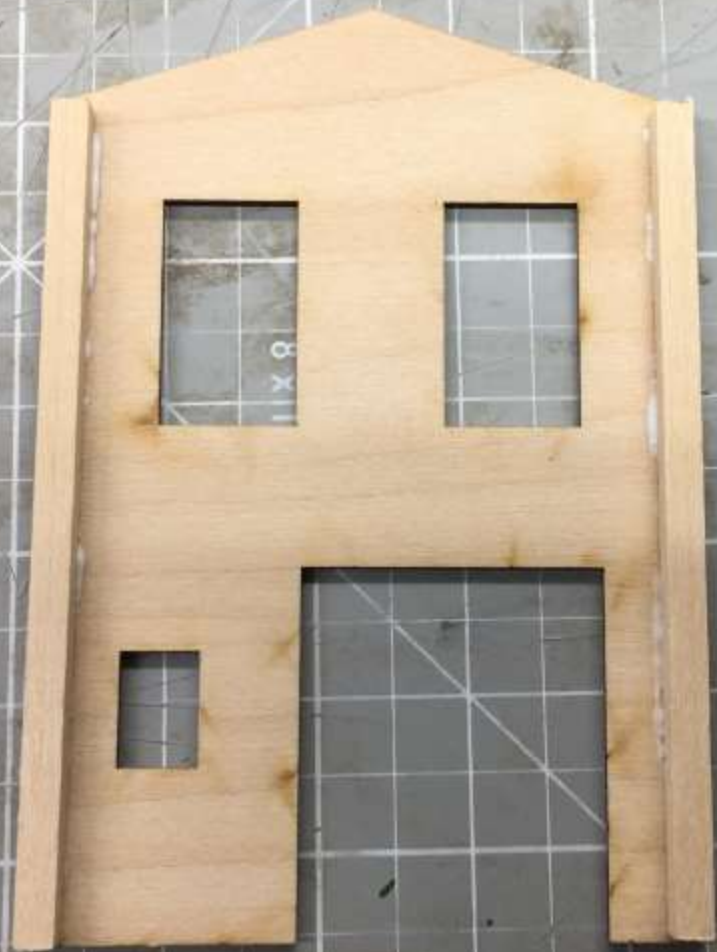
ang slight
Then add
ing th

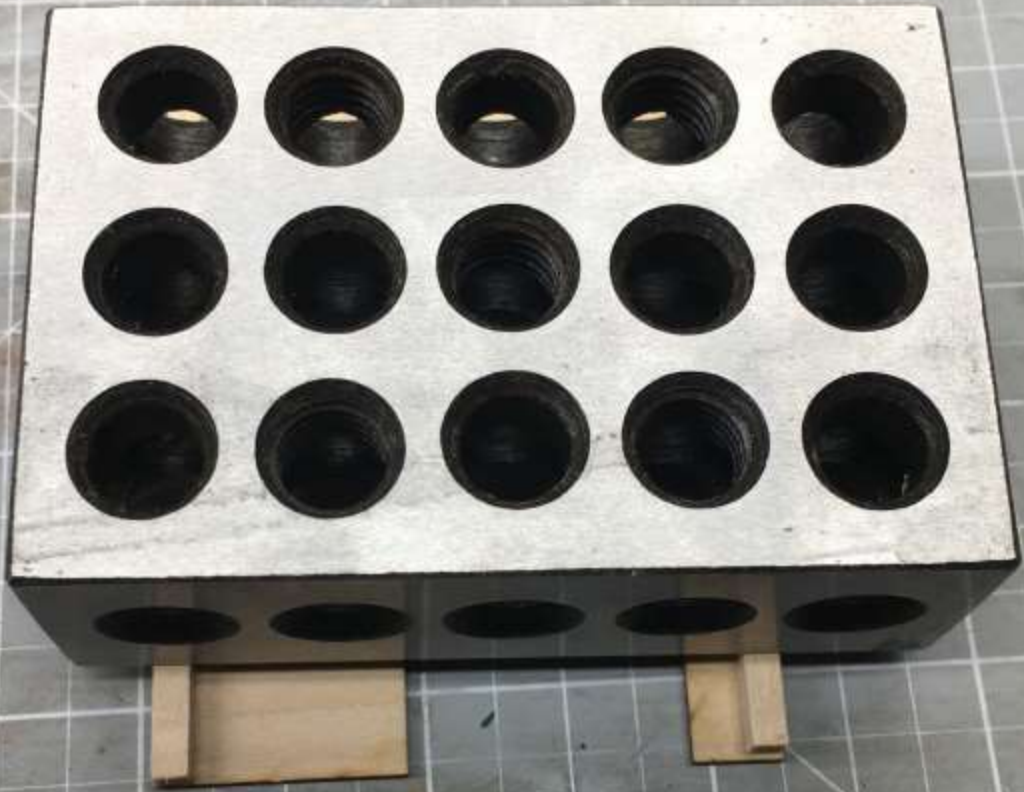
the strips covered. Also,
vary seam location so they
iggered.

en using wall spackle, push the
ny excess. Get some weathering

of to match and glue in place. Use flat
black paint to seal hole and bottom
of item like roof tar. Use a small
brush.

You:





Staining

- * Now its time to stain your wood.
- * You will not need a lot of stain but just enough. Over staining can lead to more than usual warping.
- * Use a dedicated brush for staining.
- * I prefer the Hunterline Stain products and also use A&I wash as well.
- * When applicable I use an oil wash after the walls are painted.



EXCELLENT EFFECT ON CHESTNUT WOOD. WORKS WELL ON PLASTIC, LEATHER, CARDBOARD AND HYDROCAL. **Clean Up** - Wash brushes in soap and water.

QUALITY CRAFTSMAN KITE



Weathering Mix

Wood stain with a rubbing alcohol base
8 oz. (250ml)
Made in Canada



DRIFTWOOD

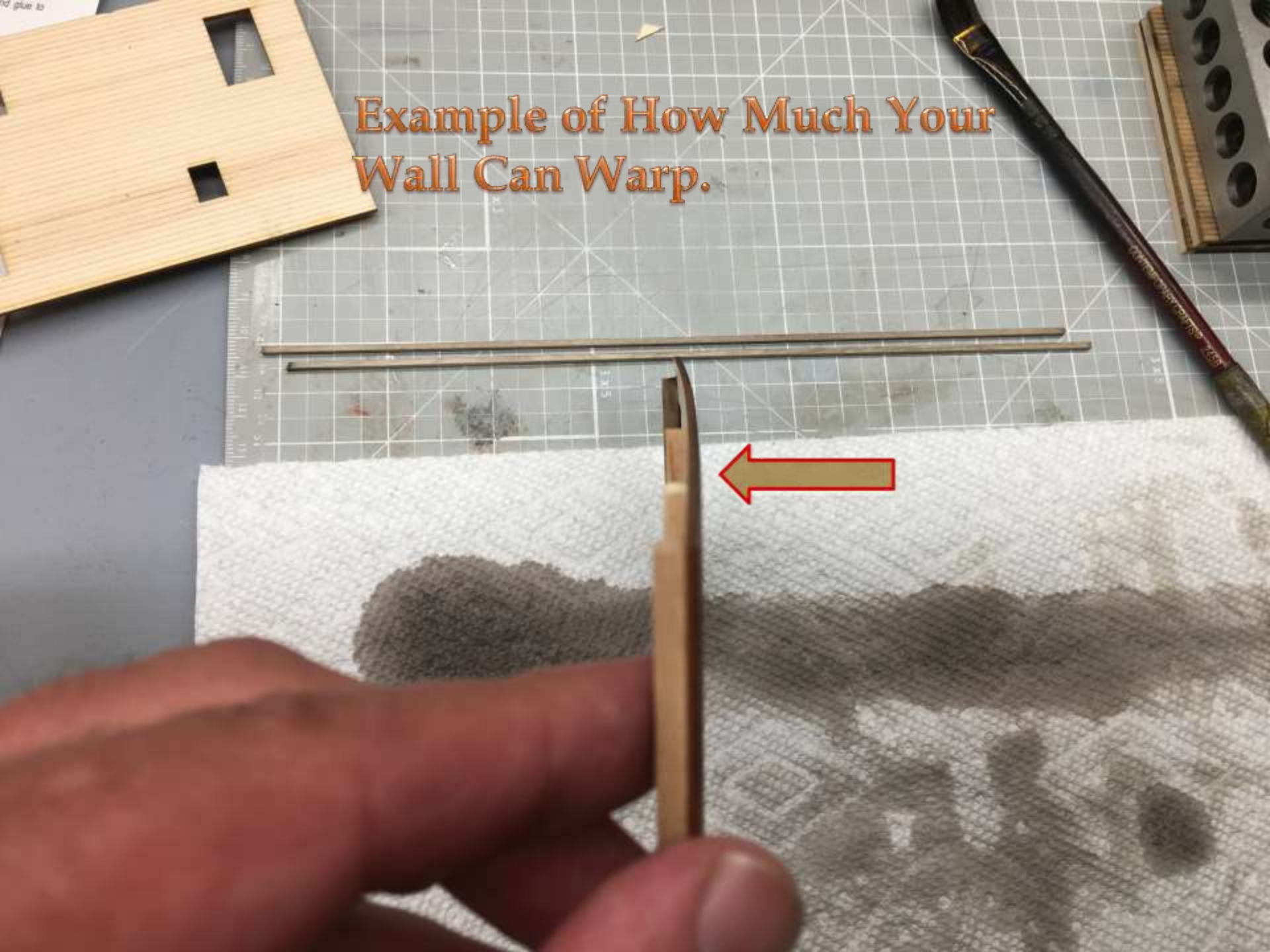
HUNTERLINE
1072 Riverbank Drive, Cambridge, ON N3H 4R6
Phone/Fax: 866-934-4174
www.hunterline.com

CAUTION: Wear protective gloves when handling.
Flammable: Keep away from heat, sparks and open flame.
Do not use in enclosed spaces.





Example of How Much Your
Wall Can Warp.



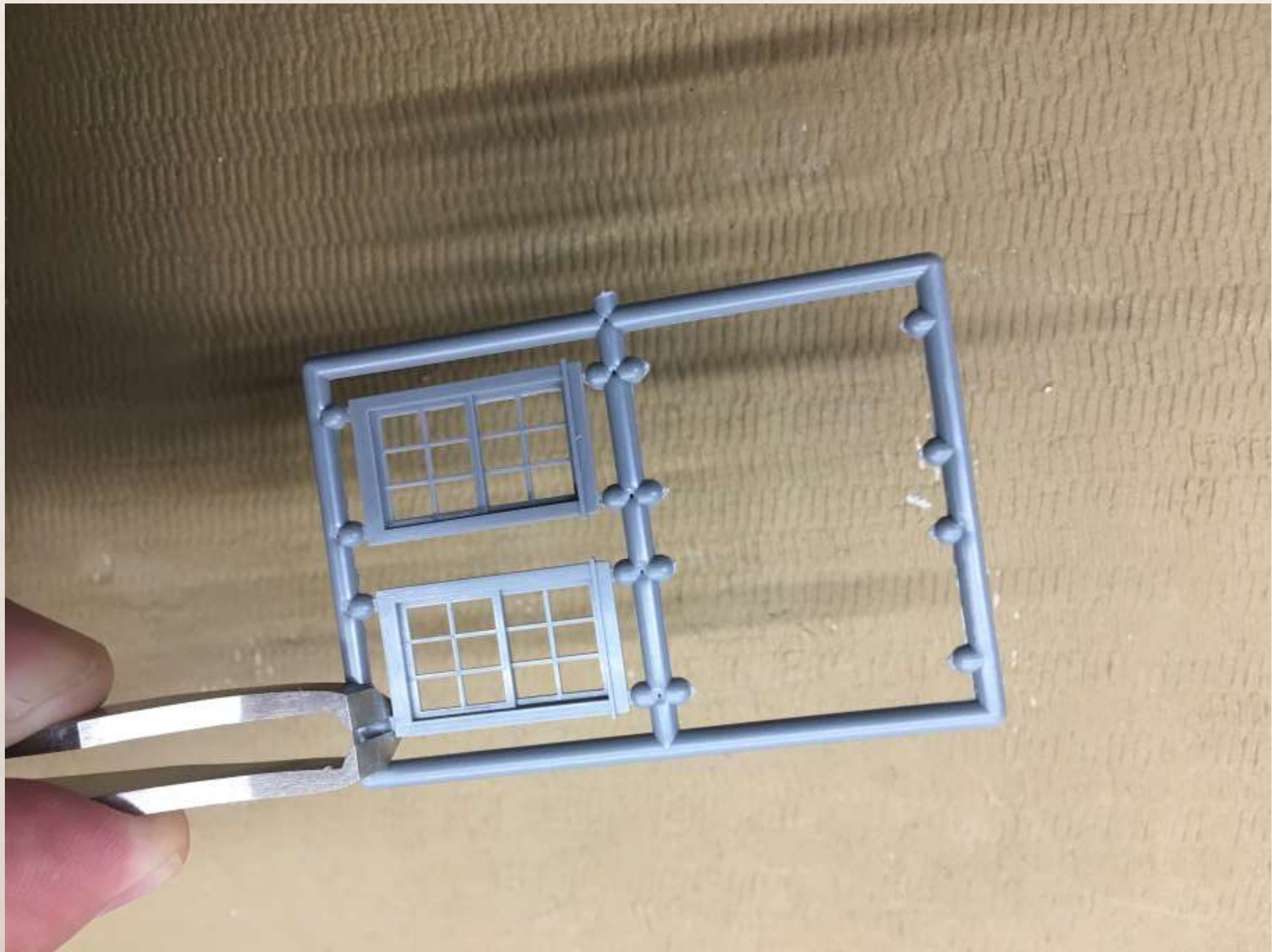


3 X 5

Time to Paint

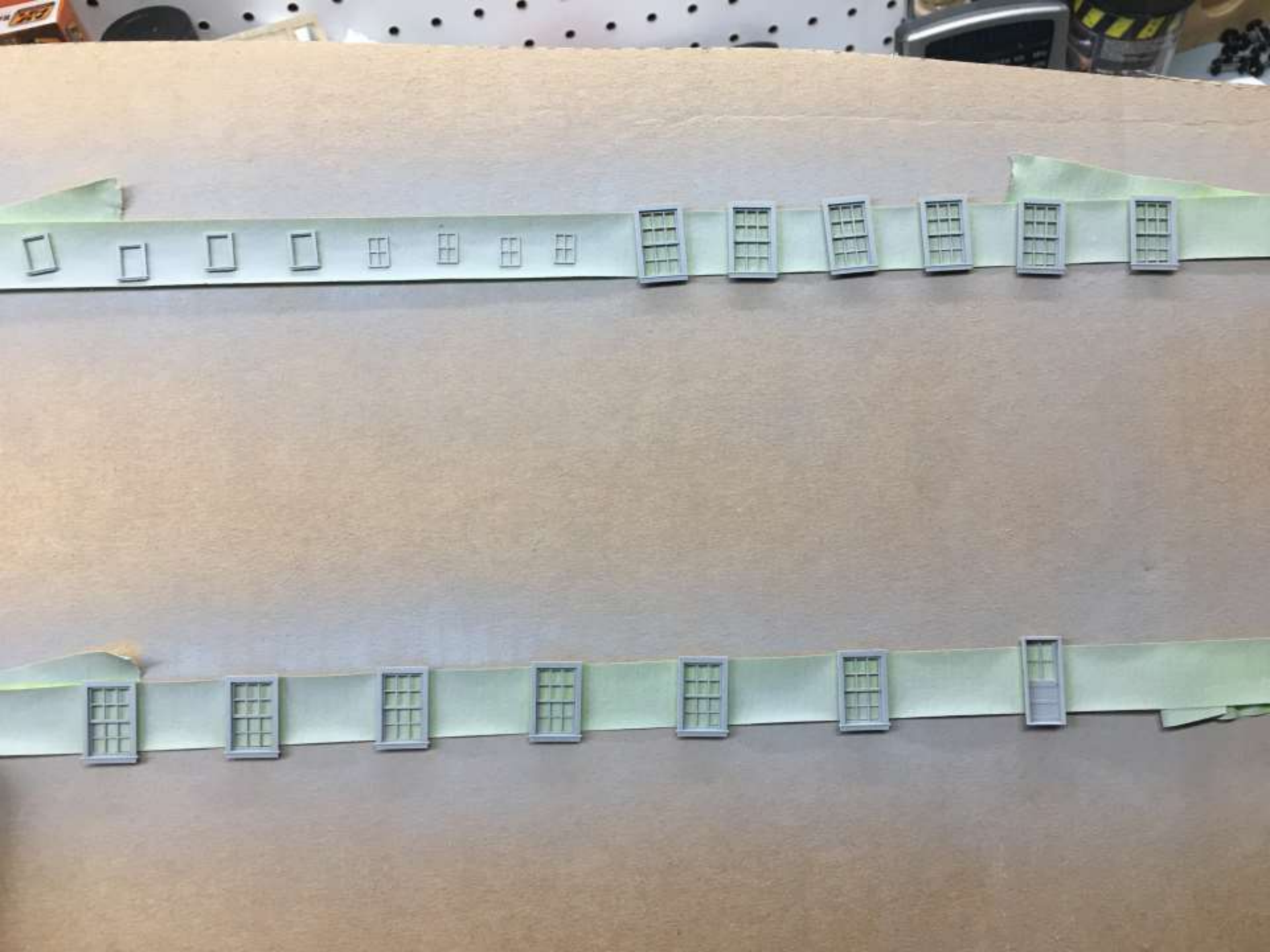
- * Once your walls are dry from the staining process you can start to paint your walls, trim and windows.
- * You will need to remove the plastic windows from the sprue and prime your plastic windows. Use a grey automotive primer of your choice. I use NAPA Colorline DC540 Gray Primer.
- * Craft paint is my paint of choice for my craftsman kits. There are many brands so choose the one that fits you the best. I mix and match and look for the best colors.
- * Soft 1/4" to 1/2" brushes work well but use what works best based on the application.





800.331.8272







ARCHMENT
ALYIC PAINT
DRYING
CLEANUP
MADE
02 50



Painting The Trim

- * So now its time to paint the trim. A brush can be used or a sponge depending on the level of weathering is needed.
- * If you use a sponge, make sure you purchase a quality grout sponge.
- * Cut into small 1-2 inch squares.
- * Use the sponge to apply the paint using the same concept of dry brushing.



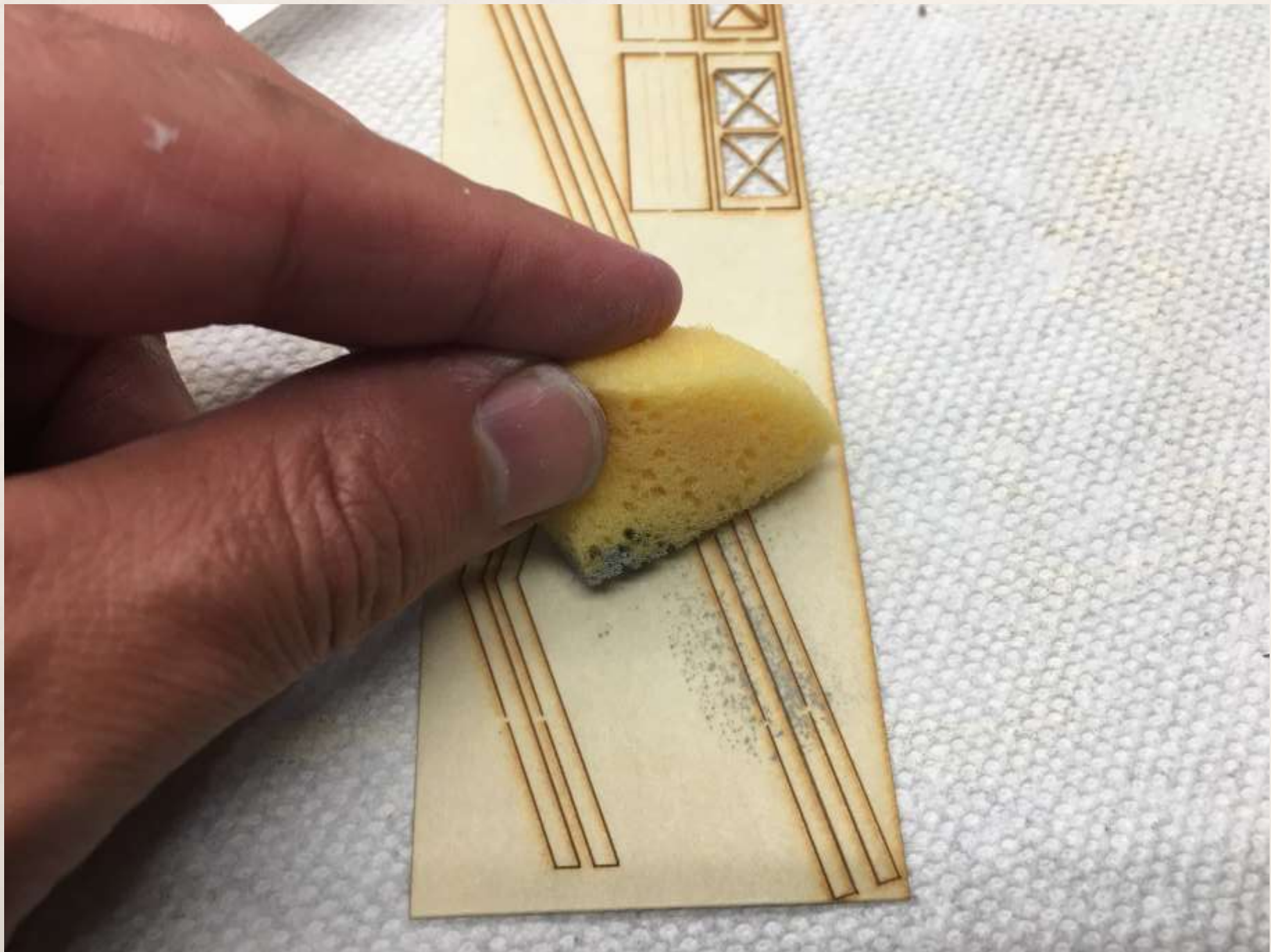
Heavy Duty All-Purpose Sponge

Esponja multiusos para trabajo pesado

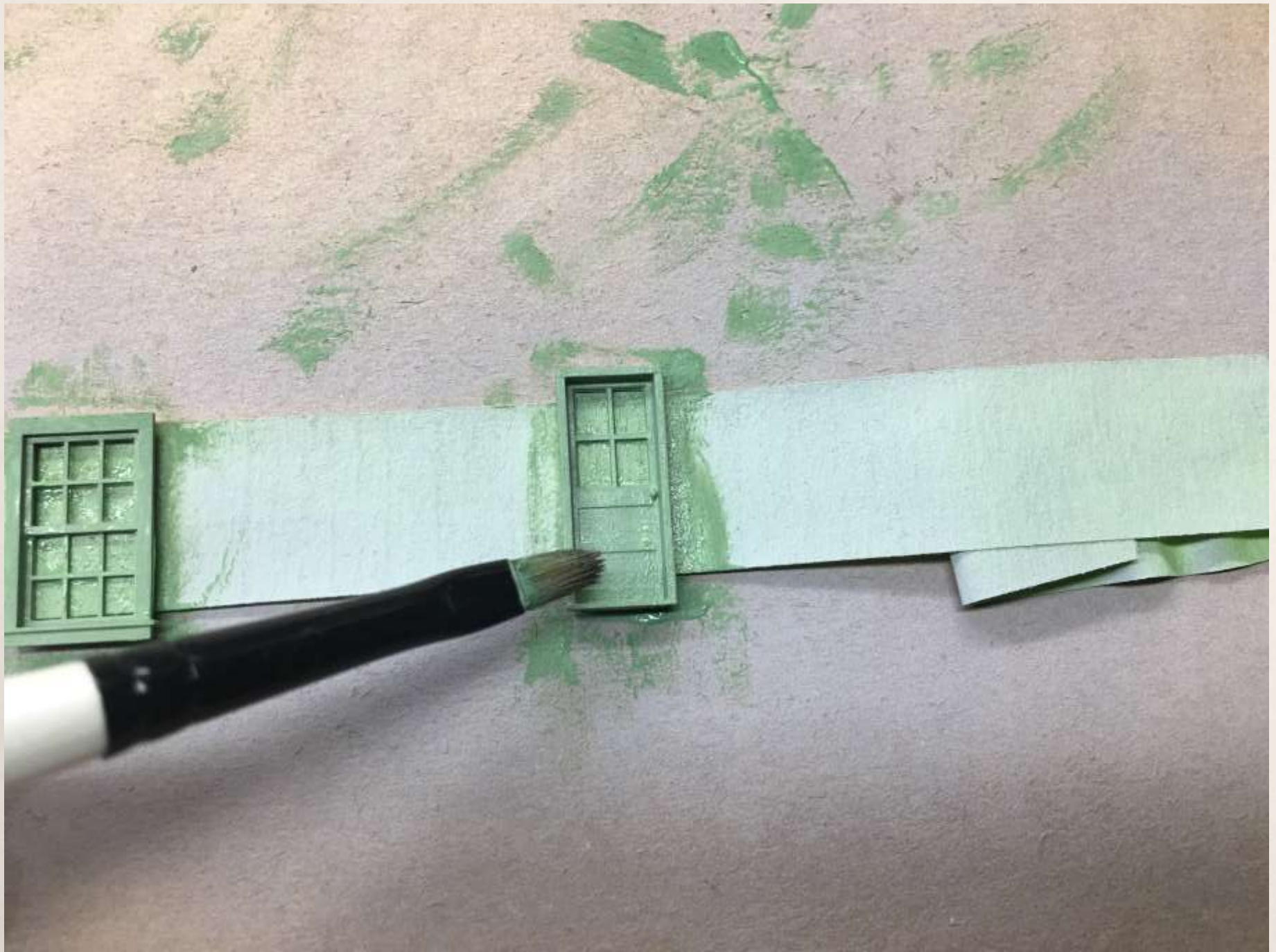
- Premium density is ideal for removing excess grout
- Superior strength provides durability for all general purpose cleaning
- La densidad primordial es ideal para remover el exceso de lechada
- Su resistencia superior le proporciona durabilidad para todo tipo de limpieza en general

700050-24









Glazing Your Windows

- * There are a couple different ways to glaze your windows. You can use the acetate or use a couple different types of glues.
- * For this application, we will use Canopy Glue.
- * Using a toothpick, add some glue and drag the glue on the rear of the of the window frame. You will see the glue suspend within the window frame.
- * You will need a special tool (1/8' square basswood glued on foam board) and place the windows on the wood sections. Allow to dry for a few hours.



HUXLEY & POWELL MILLING

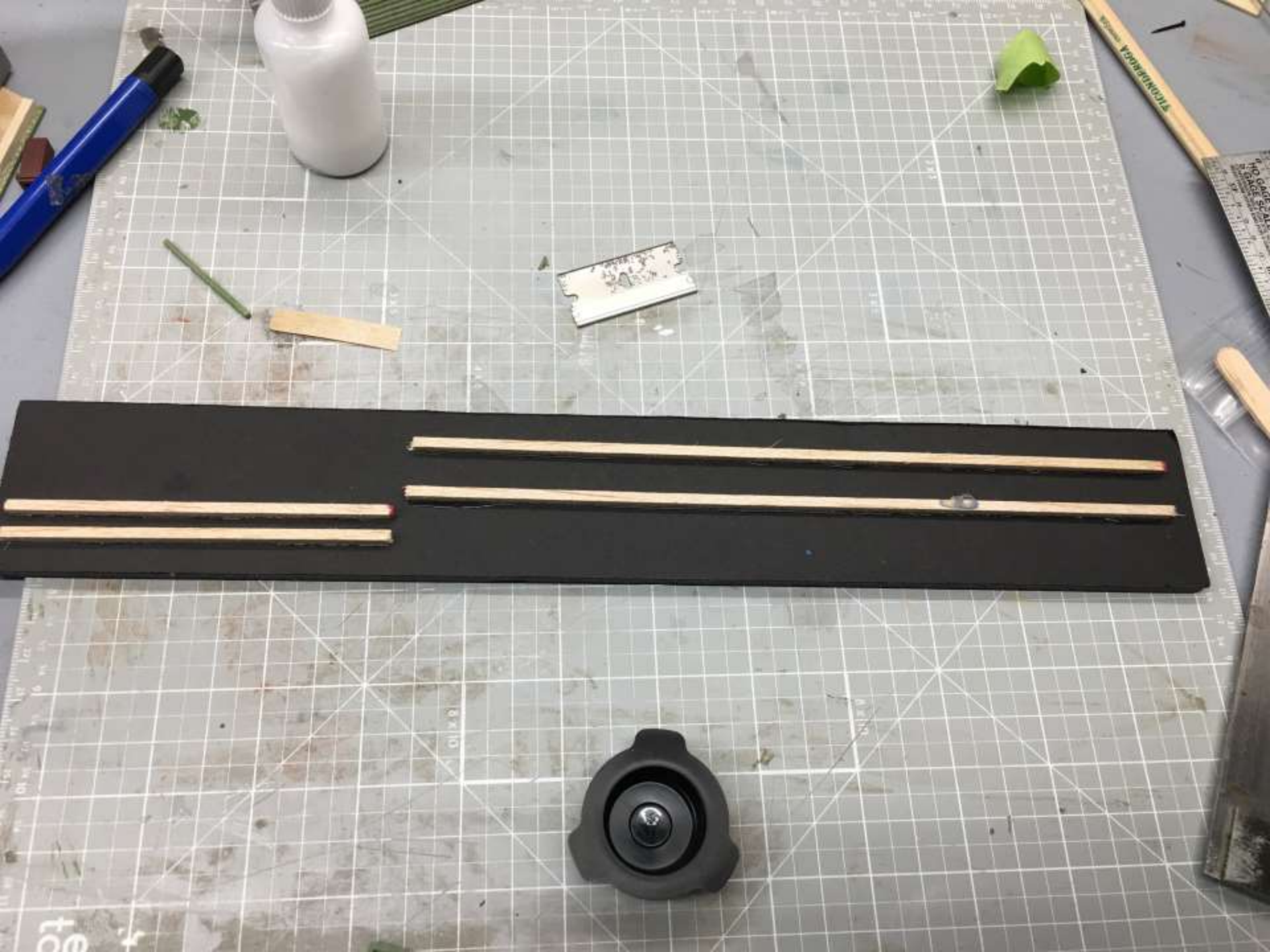
FORMULA 560

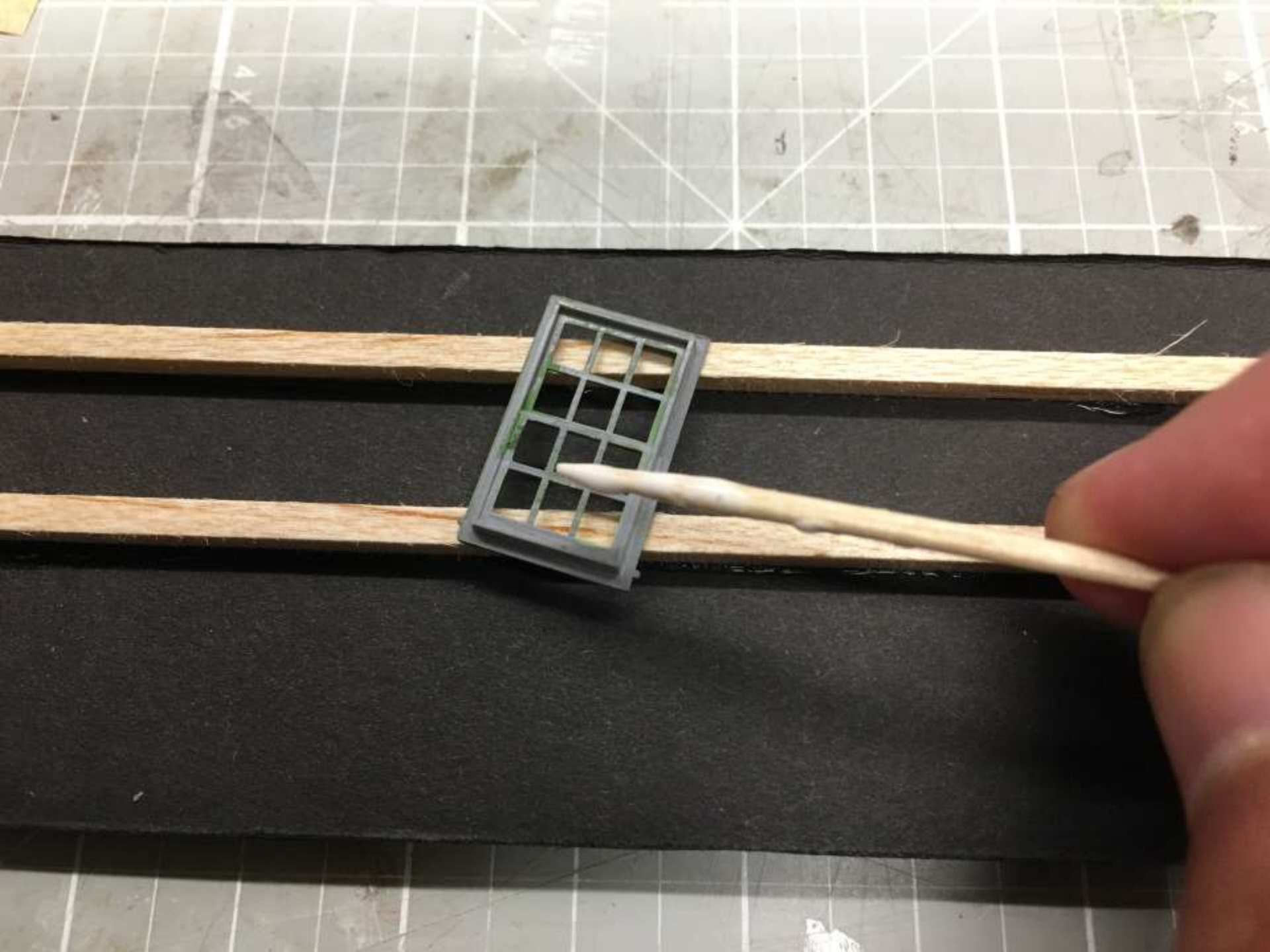
The World's Best CANOPY GLUE

- * Clear, Fast Drying
- * Bonds Canopies & Plastic Parts to Almost Anything
- * Flexible

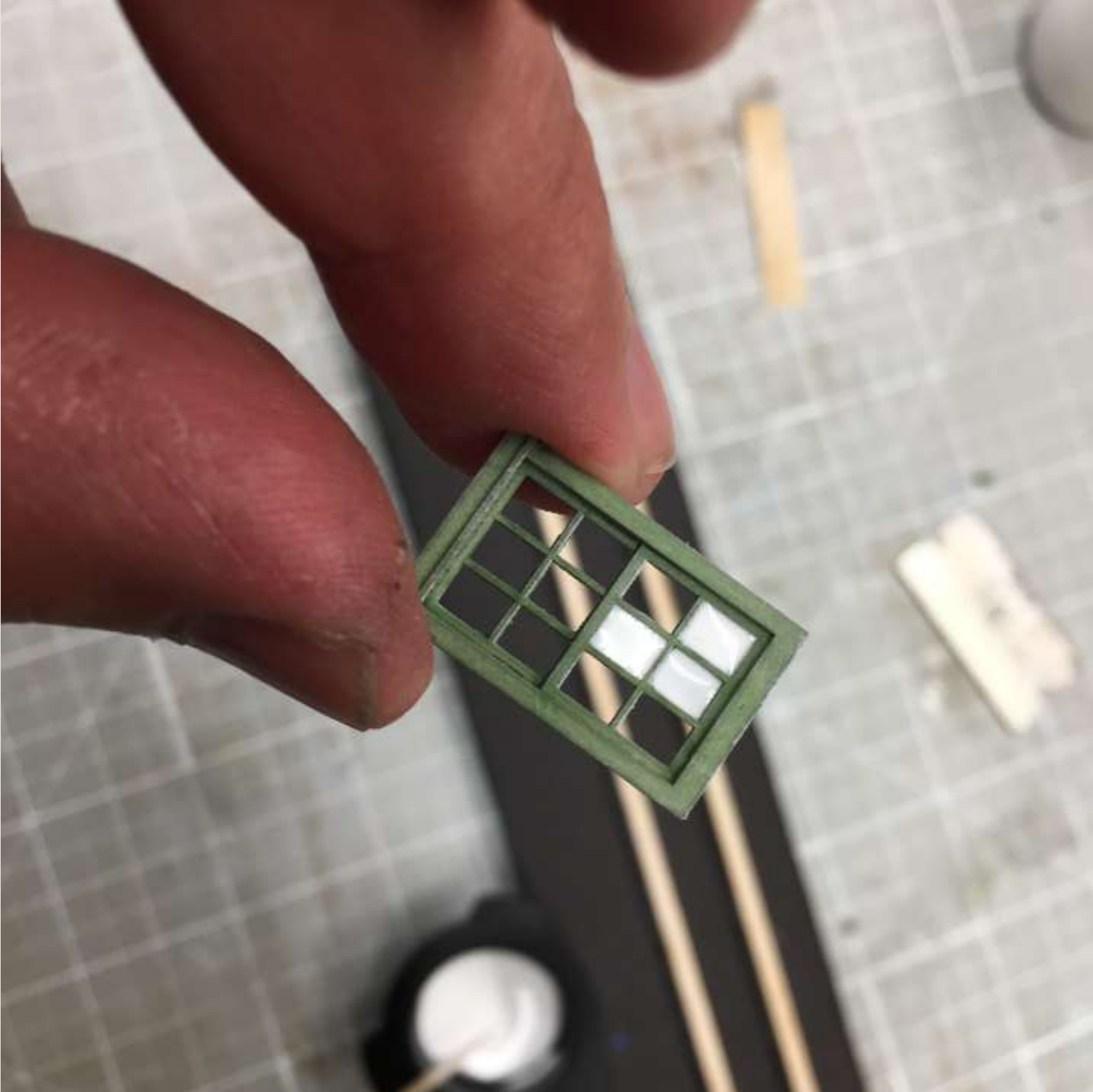
CAUTION: Mild Irritant. See back panel.
Net 2 fl. oz. (59mL) PT-56
Made in U.S.A.

PACER











Preparing the Signs

- * Apply the transfer tape to the back of the sign sheet.
- * You can weather the sign before cutting it out or after.
- * Using a new #11 blade, cut out the sign using a metal ruler.
- * Peel back the transfer tape backing and apply the sign on the wall.
- * Using a toothpick, gently rub the sign into the clapboards as it gives the effect the sign had been painted on.





HUXLEY & POWELL MILLING

HUXLEY & POWELL MILLING

HUXLEY & POWELL
LATHE WORK MILLING





HUXLEY & POWELL MILLING

HUXLEY & POWELL MILLING

HUXLEY

HUXLEY & POWELL
LATHE WORK MILLING

HUXLEY & POWELL MILLING

LING

5 x 7

5 x 7





MILLING

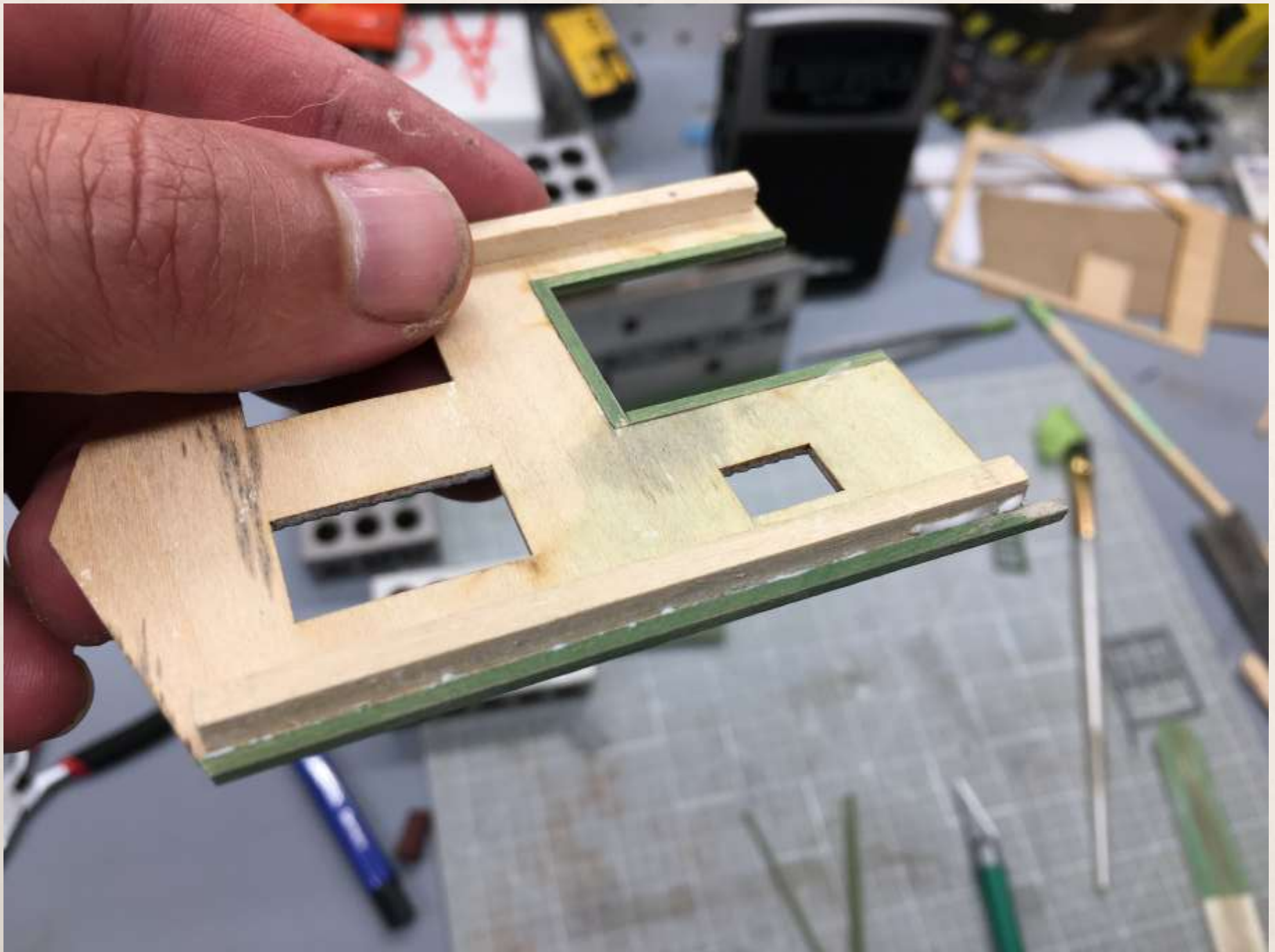
HUXLEY & POWELL MILLING

8 X

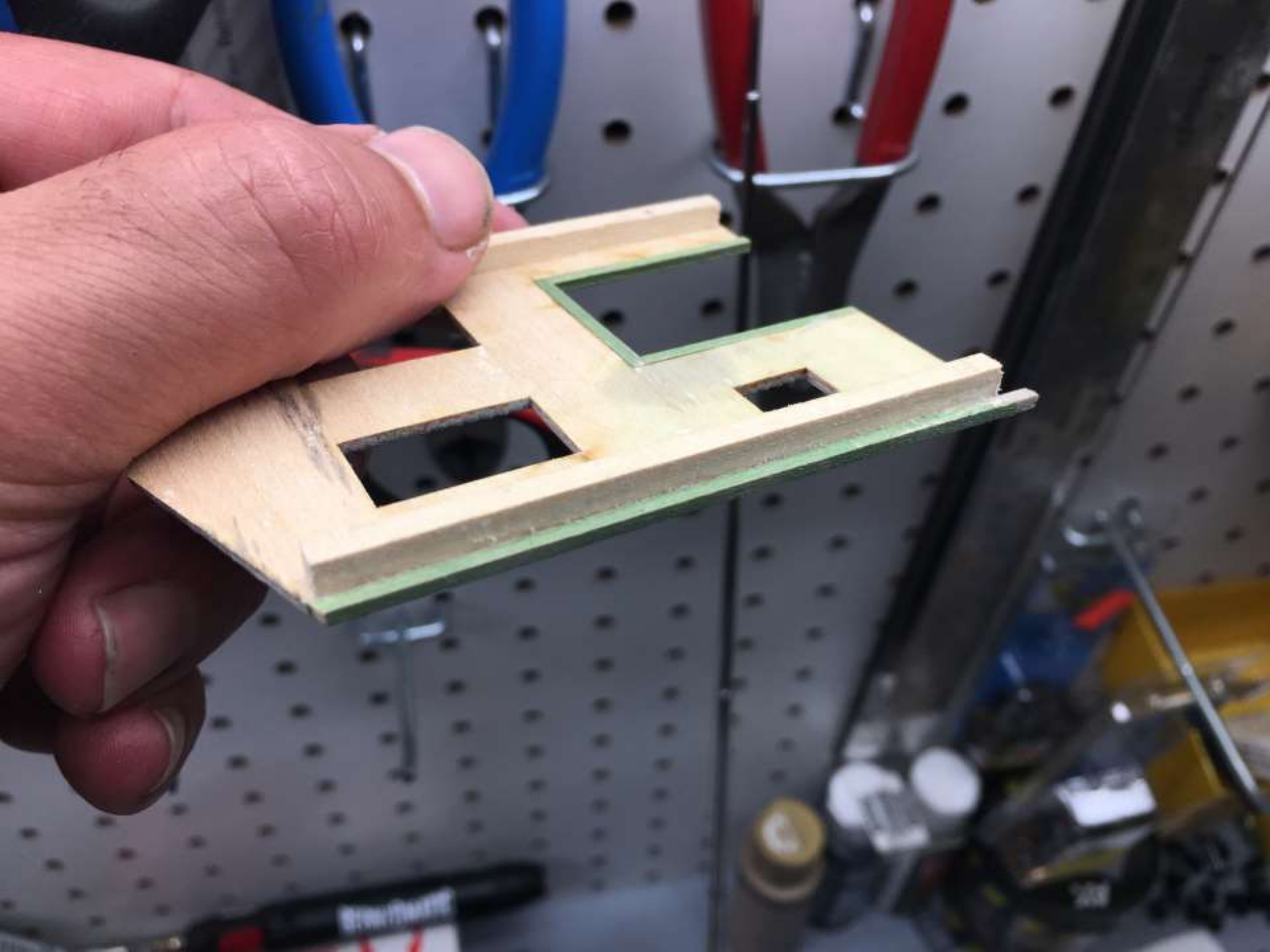


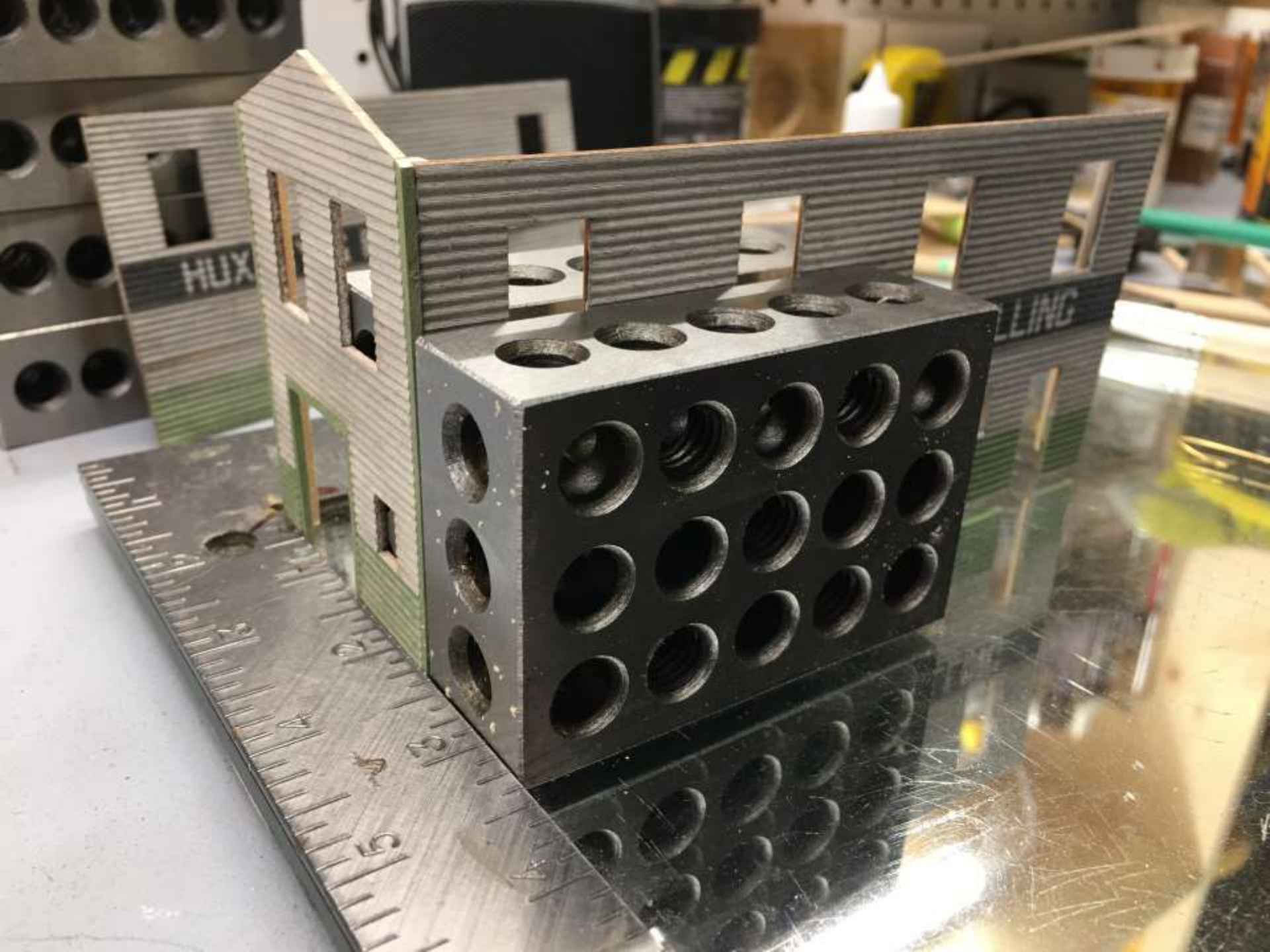
Preparing The Walls / Trim

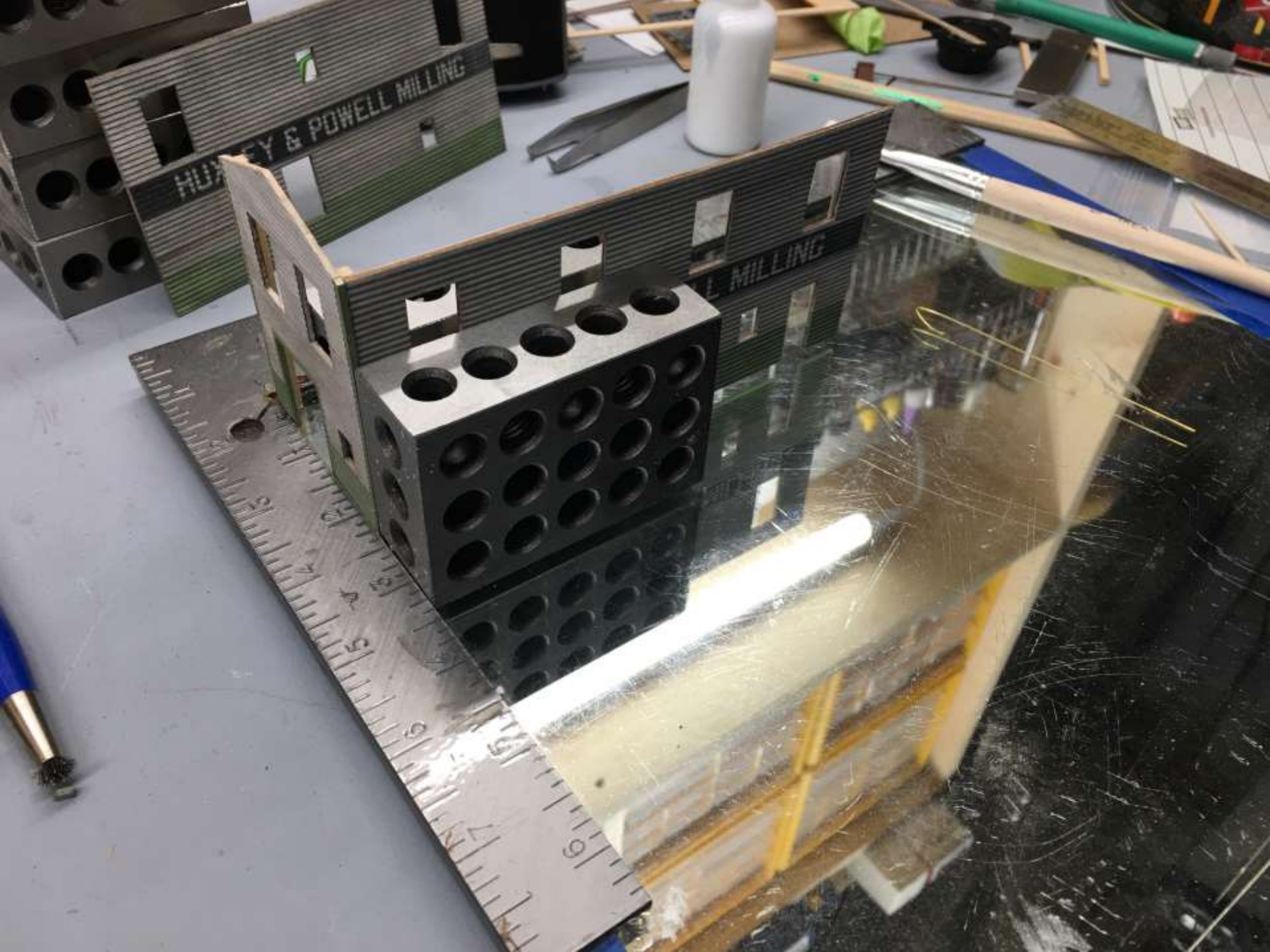
- * First you will want to glue on your trim. When you do this, you could have extra glue come out on the back and you should clean it out to prevent assembly issues from glue build up.
- * Simply use the edge of a razor blade and drag out any excess glue.
- * Once the trim dries, you can assemble the walls. You can use squares, 123 Blocks, rubber bands and clamps. (Not Used)













HUXLEY & POWELL MILLING

Preparing the Roof

- * You will want to draw some straight lines on the roof card. This will help keep your tar paper roof lined up properly when you install it.
- * Next put your transfer tape over the top of the lines and trim excess transfer tape.
- * Next paint the underside black about 1/8" around the inside edge. This will eliminate the card stock from showing.
- * Glue on your roof card and let dry.













HAY & POWELL MILLING



3 x 5

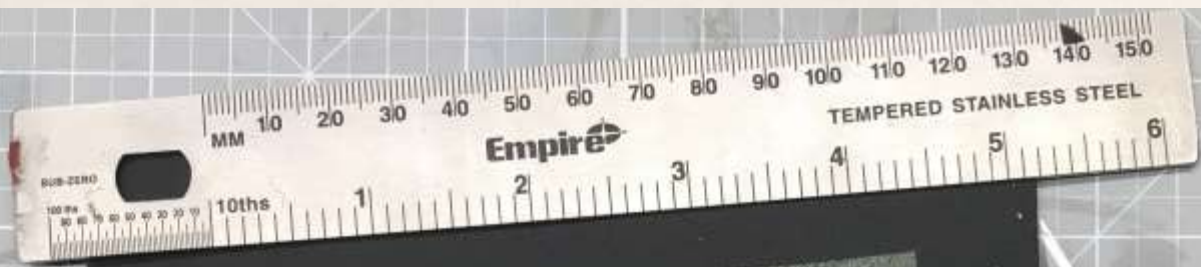
8 x 10

Preparing the Tar Paper

- * The kit comes with tar paper. You can use as is or paint any color you wish. If you decide to paint it, paint the side without the lines.
- * Now using a straight edge and cutting blade, cut out the tar paper strips using the lines on the paper.
- * Now you can install your tar paper roof. Peel back the layer of transfer tape and begin installing the tar paper. You will want a small overlap ($1/32$) on each piece of tar paper. Stagger the pieces and cut if needed to create a variety of seams. (see photos)

FOS SCALE
MODELS

HO SCALE ROOFING PAPER





2 x 3

8 x 10

x7

8 x 10

3 x 5





Adding Window Shades

- * This is optional but does give the model some character.
- * You can use card stock or paint.
- * In this application, I used Depot Buff.
- * Make sure the windows are right side up.
- * Use variety when painting the shades. You may need two coats to accomplish this.
- * Once dry you can install your windows.

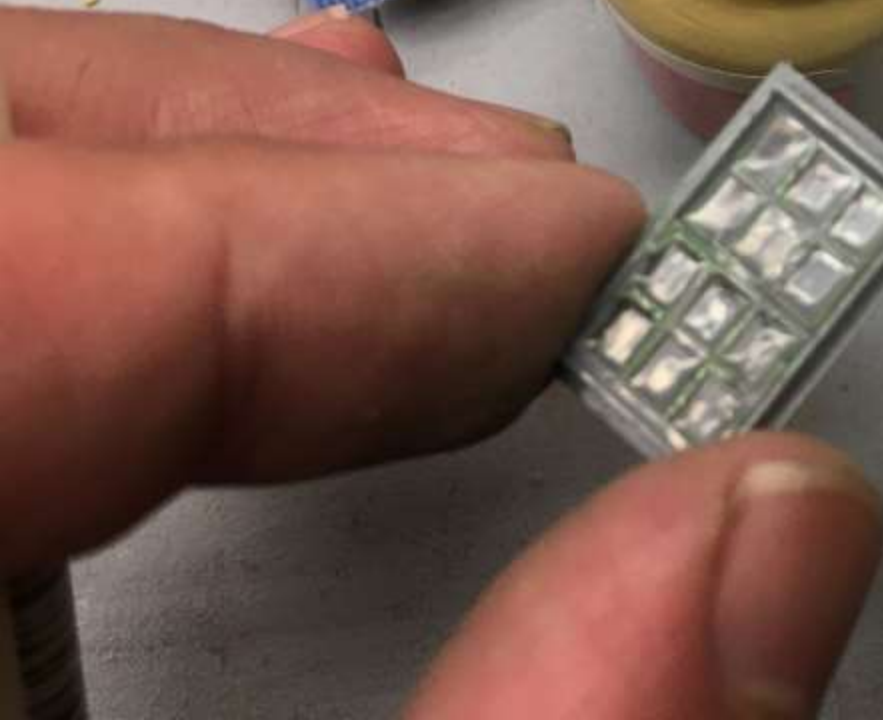
BONDS MOST ANYTHING
COLLE TOUT ... EN PRESION
ONE CASE TODAY

BONDS CRYSTAL CLEAR
DEVIENT TRANSPARENT EN SECHER
TRANSPARENTE COMME LE CRISTAL EN

PERMANENT AND FLEXIBLE
PERMANENT ET SOUPLE
PERMANENTE Y FLEXIBLE

60 ml / 2 fl.oz.

NON TOXIC GLUE™ / COLLE NON TOXIC
PEGAMENTO NO TOXICO™





Final Trim Installation

- * Now you can install your trim or assemble windows and doors if they are laser cut.
- * At this point, your chimney will need to be installed. Simply cut out an appropriate sized hole and install your chimney.

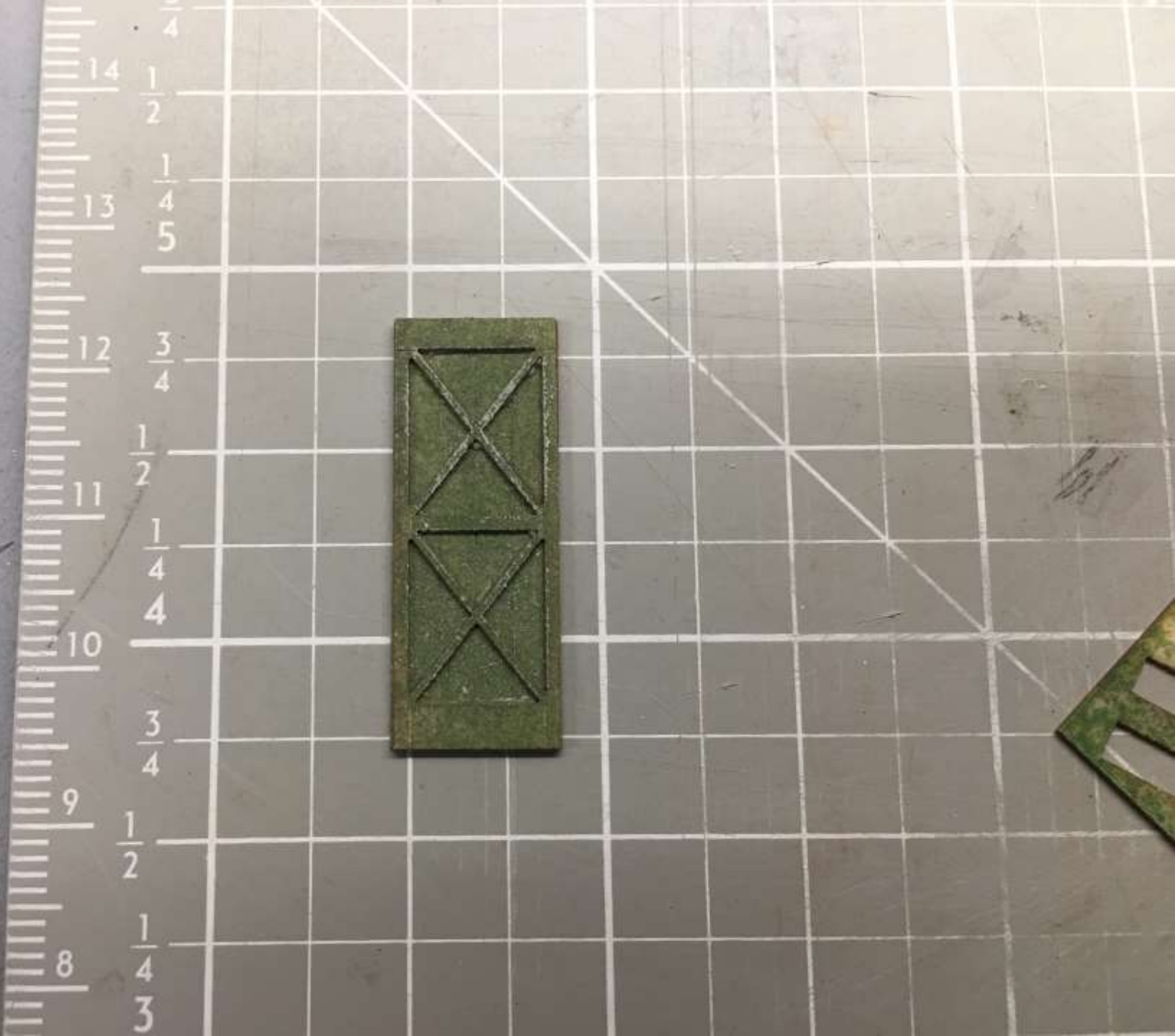


2 x 3

4 x 6

5 x 7

5 x 7



The Finished Product

- * This will bring you to the end of the build.
- * Building craftsman style kits can be rewarding and fun. Starting small and working your way to larger kits is a great way to learn and improve on your skills.
- * Fos Scale Models has a great line of kits. They offer the Foundation Series, and many other great kits. They sell not only kits but different supplies to ensure your model is looking realistic. Check out their website:
fosscalemodels.com
- * Lets look at the finished model.



HUXLEY & POWELL
LATHE WORK MILLING

HUXLEY & POWELL MILLING





HUXLEY & POWELL MILLING



HUXLEY & POWELL MILLING

Can I Keep Going?

- * Once the model is done, you could always add to it. Here are some items that you can do:
- * Weathering (powders, oils, and washes)
- * Add detail castings
- * Add a bump out
- * Add some fine detail such as rust streaks, tar sealer around stacks and chimneys.
- * Add a concrete slab
- * LED lighting

MICROLUMINA

MINIATURE LIGHTING

MLK-002

\$9.95

Basic Structure Lighting Kit

This kit contains the electronic components (wire not included) for lighting any small to medium size structure model. Instructions are included showing basic wiring examples and installation tips.

Included in kit:

- 2 ML-CL Current Limiters
- 1 5RWW 5mm Warm White Flood LEDs
- 2 ML-3RWW 3mm Warm White Flood LEDs
- 3 ML-3RSWW 3mm Warm White Spot LEDs

Recommended Tools and Materials (not included in kit): wire, cardstock or thin plywood, basic soldering tools, Microlumina Copper Tape ML-TAPE

Solid State LED lighting—no bulbs to replace!

Will work on any DC power source.

90V DC max.

Tools not included. For ages 14 and up.

A product of:

Microlumina LLC

125 Copperwood Drive

Bethel Park, PA 15102





HUXLEY & POWELL
LATHE WORK MILLING



HUXLEY & POWELL MILLING







HUXLEY & POWELL MILLING









Any Questions ?

